

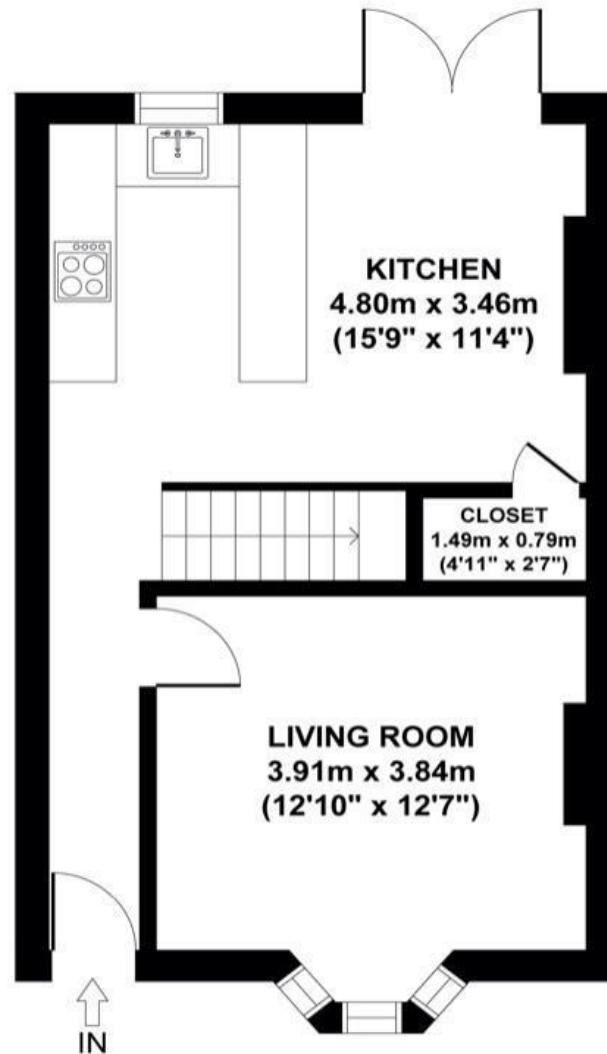
Boardwalk

John Street

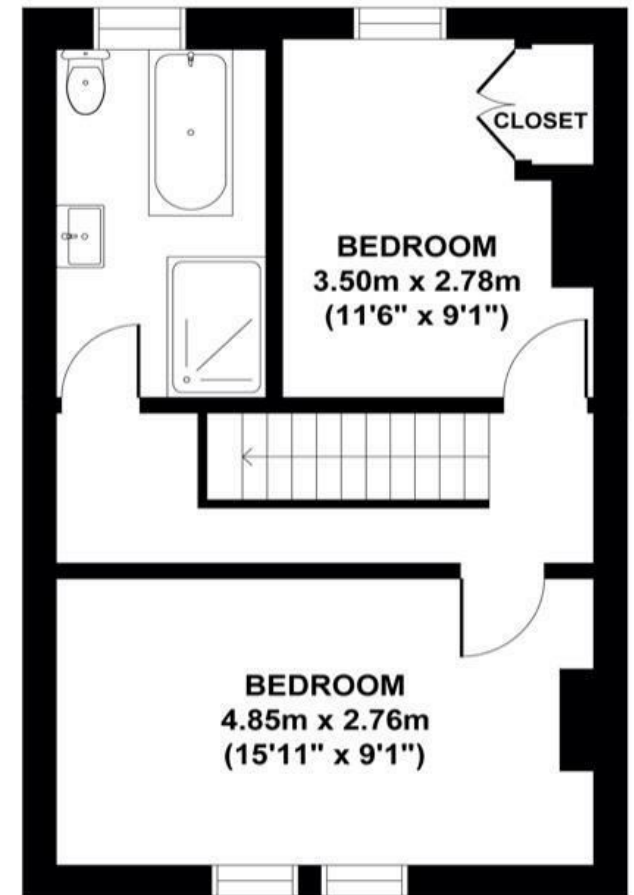
ST WERBURGHS

APPROXIMATE FLOOR AREA
77 SQM / 829 SQFT

BOOK A VIEWING
01179 898 222
hello@boardwalkpropertyco.com



GROUND FLOOR
GROSS INTERNAL
FLOOR AREA 39 SQ M



FIRST FLOOR
GROSS INTERNAL
FLOOR AREA 38 SQ M

Illustrations are for reference purposes only, measurements are approximate, not to scale.

Boardwalk

John Street

ST WERBURGHS, BRISTOL



£400,000



2 Bedrooms



Bristol, BS2



1 Bathrooms

QUIET

'We've loved living in St Werburghs for the past three years, and are so sad to be leaving. With friendly neighbours, a variety of shops and restaurants right on our doorstep on Mina Road, outstanding pubs like the Duke of York close by, and access to peaceful green spaces such as Narrowways Nature Reserve, it's been a wonderful place to call our home. We had a great time updating the property during our time there, and hope the new owners enjoy living on John Street as much as we have.'

